

***Cultural Norms, How they have  
Changed and What you Can do to Help***

Cheryl G. Heaton, DrPH  
President & CEO  
American Legacy Foundation  
April 17, 2005  
Arlington, VA

## *Secondhand Smoke and America's Silent Toll*

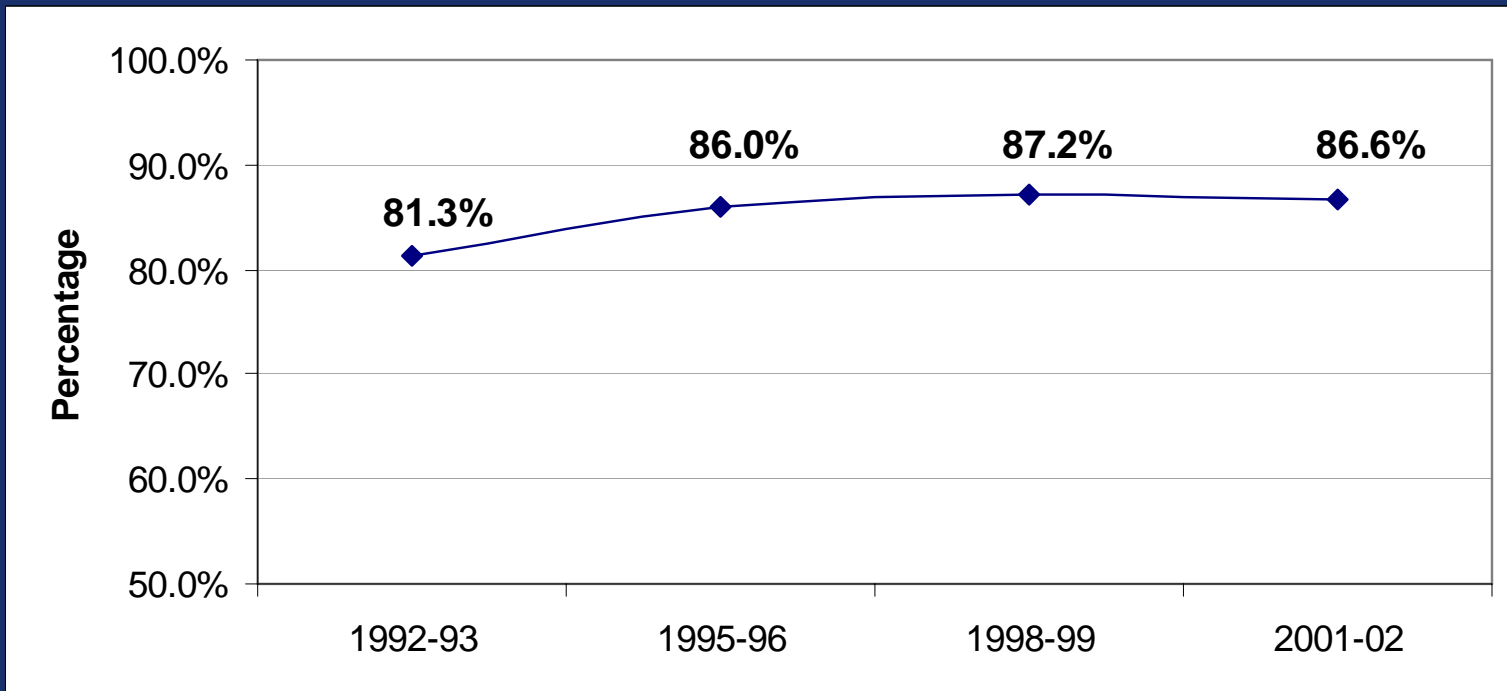
- Concern about health risks of tobacco typically focus on adult smokers but non-smokers, particularly children, are at risk for serious consequences from passive exposure through secondhand smoke.
- Secondhand smoke puts children at risk for:
  - low birth weight
  - sudden infant death syndrome (SIDS)
  - asthma,
  - ear infection
  - fire-related injury and death

## *Secondhand Smoke and America's Silent Toll*

- Despite these immense health risks, 22.5% of adult Americans - nearly 46 million people - still smoke.
- This presentation will cover
  - Workplace and household smoking policies
  - Adult attitudes toward smoking policies
  - Youth exposure to secondhand smoke
  - Adult beliefs about secondhand smoke
  - Impact of secondhand smoke and tobacco use on children's health

# Workplace Smoking Policies

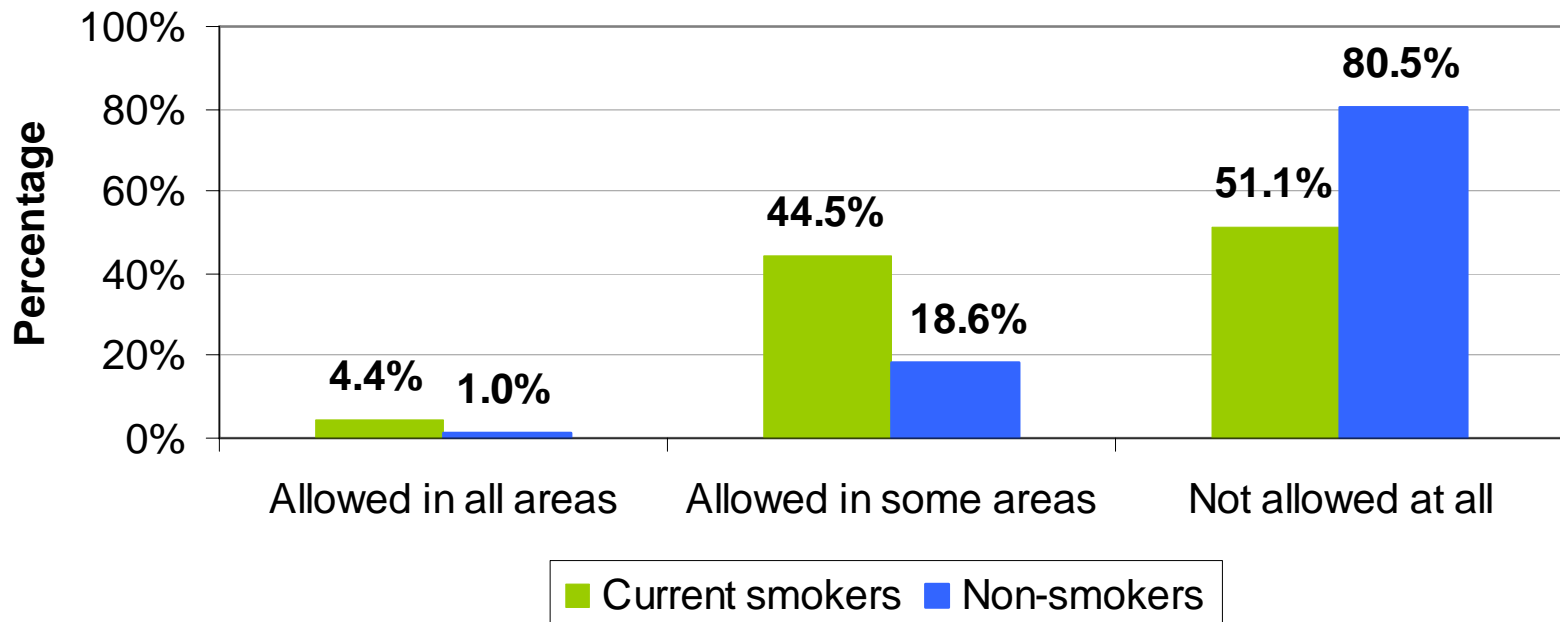
- 87% of adults in the U.S. have an official policy restricting smoking the workplace



- 84% of adults have a workplace policy that restricts smoking in **any public area**.
  - 14% report smoking is allowed in some public areas
  - 2% report smoking is allowed in all public areas
- 92% of adults work in a workplace that bans smoking in **any work area**.
  - 7% report smoking is allowed in some work areas
  - 1% report smoking is allowed in all work areas

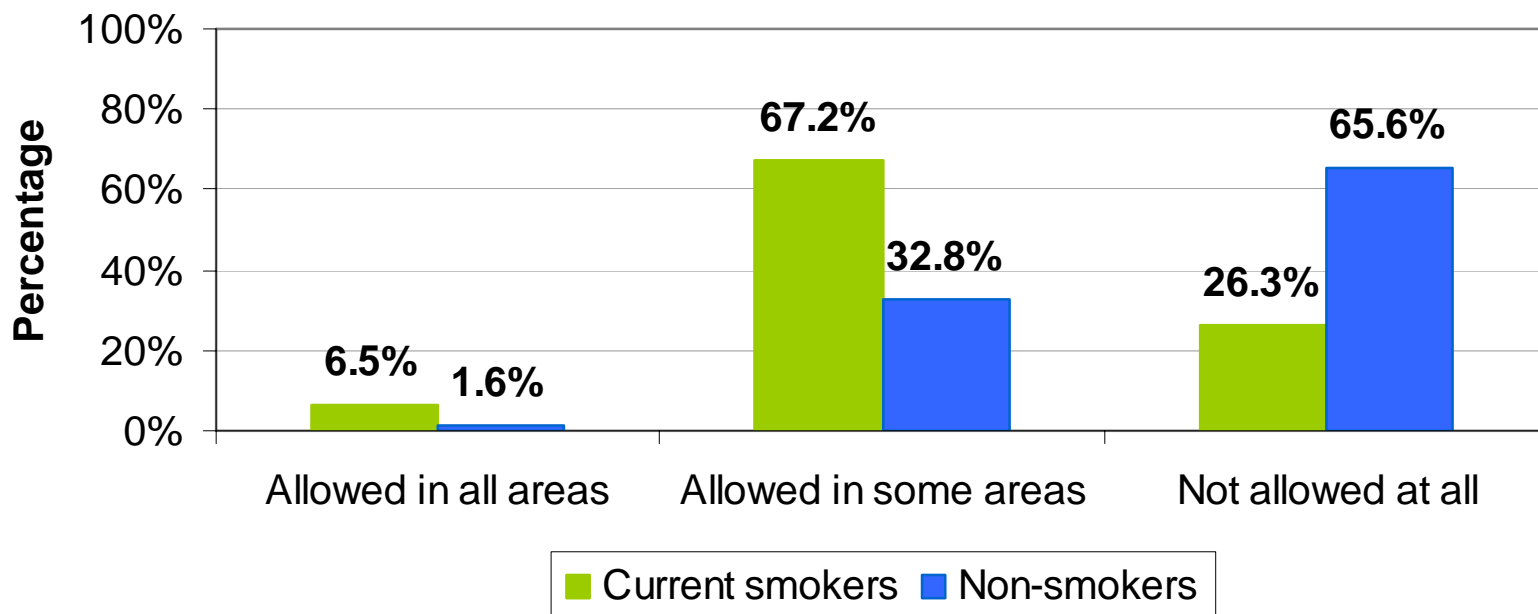
# Adult Attitudes toward Smoking at Work

**Where Smoking Should Be Allowed in Indoor Work Areas by Smoking Status**



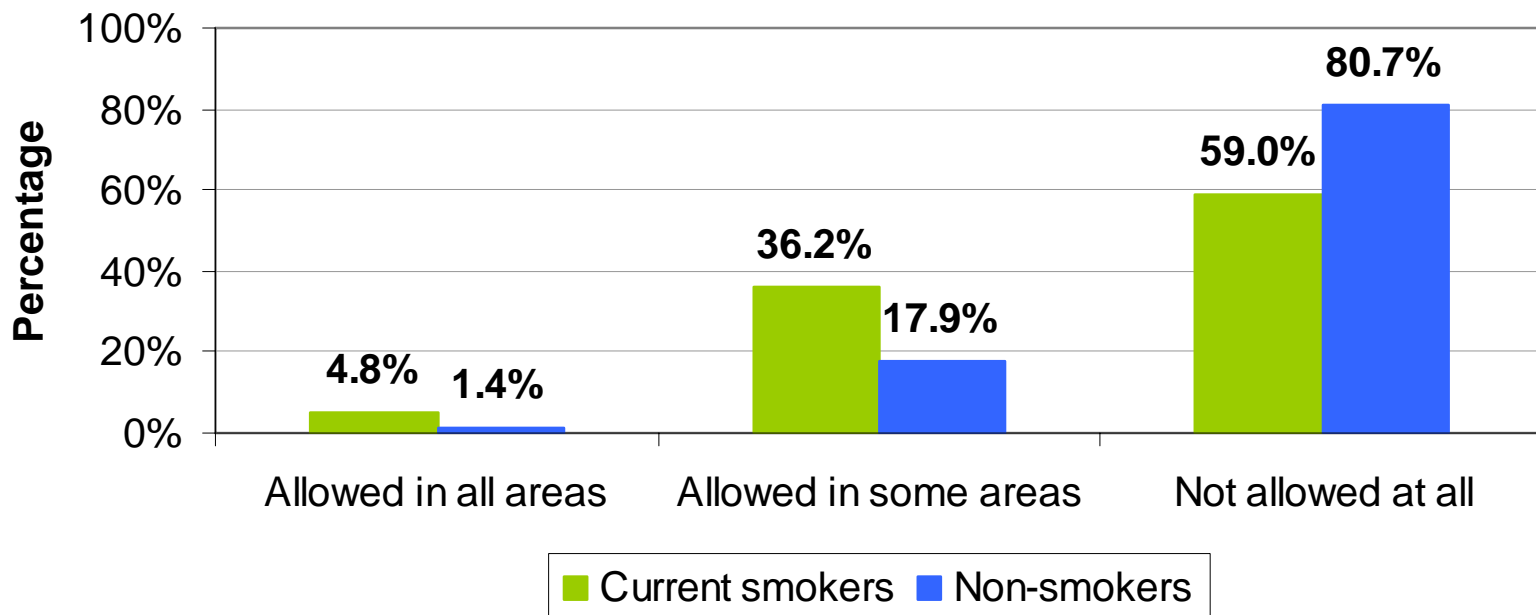
# Adult Attitudes toward Smoking in Public Places - Restaurants

**Where Smoking Should Be Allowed in Restaurants by Smoking Status**



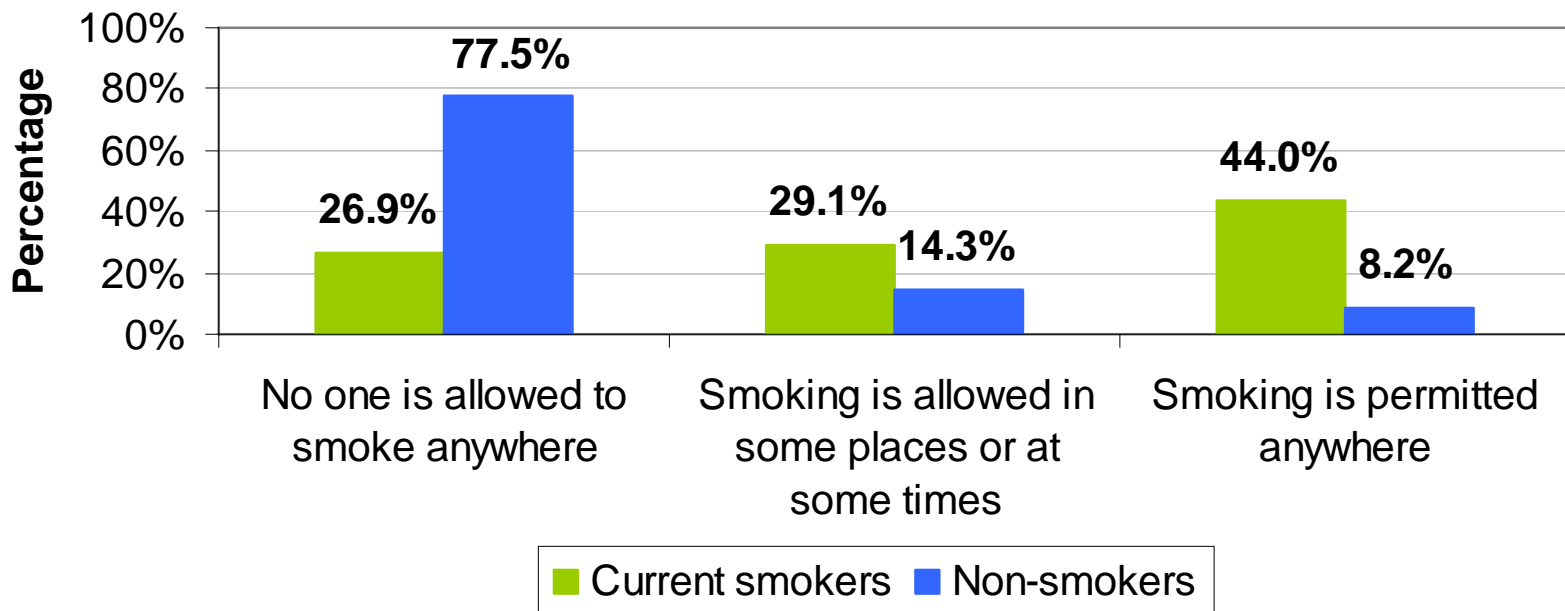
# Adult Attitudes toward Smoking in Public Places - Malls

**Where Smoking Should Be Allowed in Shopping Malls by Smoking Status**



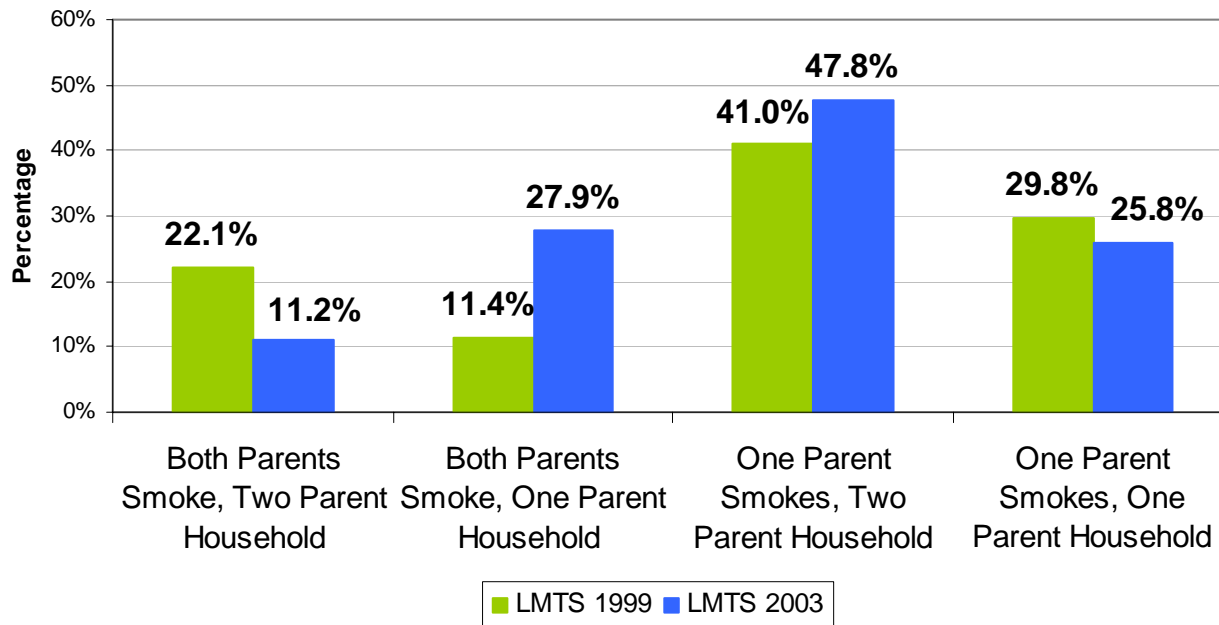
# Home Smoking Rules

## Home Smoking Rules by Smoking Status



# Household Smoking Bans

**Prevalence of Households with Complete Home Smoking Bans by Number of Smoking Parents and Parents Living in Household**

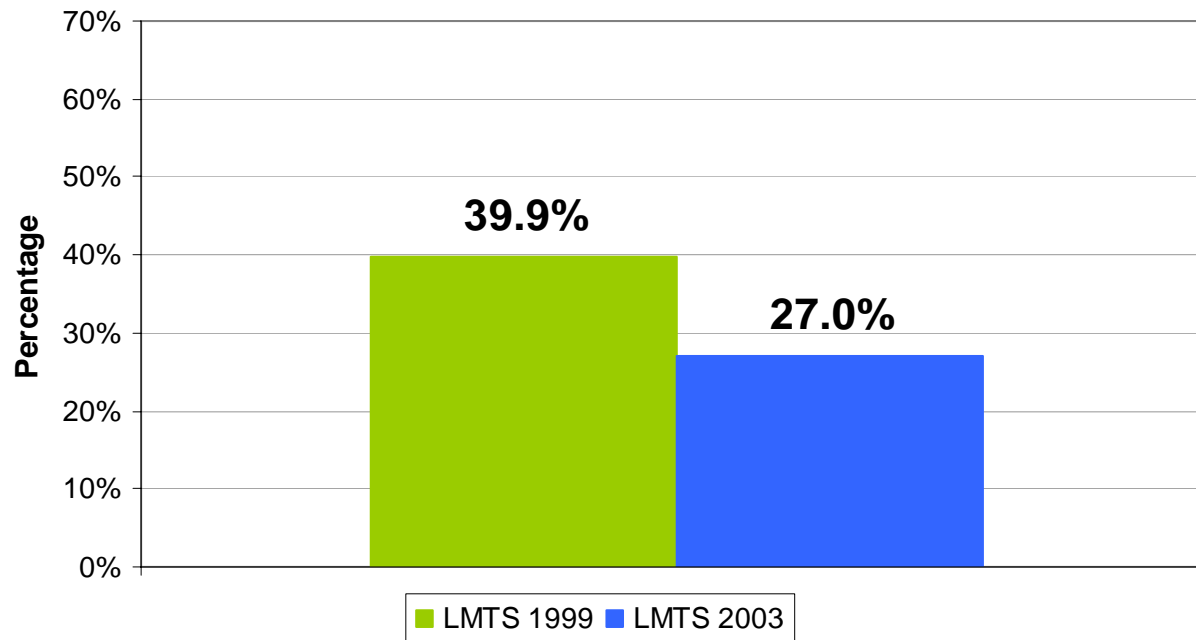


## *Youth Exposure to Secondhand Smoke at Home*

- In 82 percent of the cases where a young person lives with a smoker, that smoker is a parent.
- About 5.6 million young people between ages 12 and 17 currently live in a household with at least one parent who smokes; of these 1.3 million live in a household with two smoking parents.\*

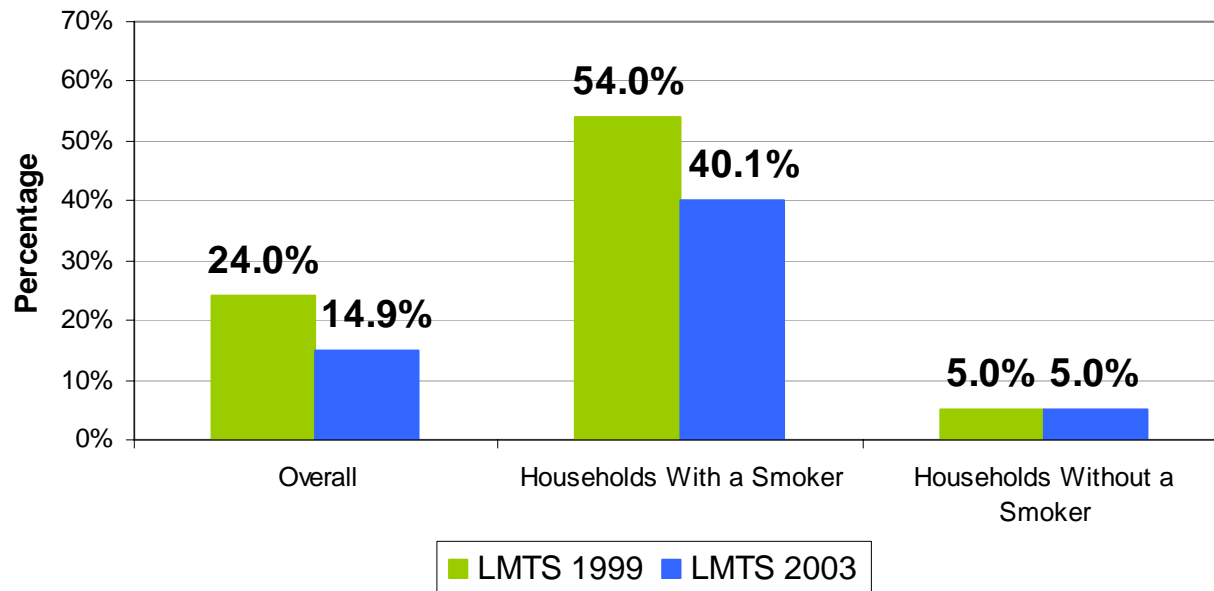
# Youth Exposure to Secondhand Smoke

**Prevalence of Youth Living in a Household with At Least One Smoker**



# Youth Exposure to Secondhand Smoke

## Daily Secondhand Smoke Exposure in a Room and/or in a Car by Household Smoking Status



## Overall Health

- 70% of smokers and 92% of non-smokers believe it is harmful to a person's health to live in a home where smoking is allowed indoors.
- 60% of smokers and 90% of non-smokers believe inhaling SHS can cause lung cancer in non-smokers.

## Children's Health

- 57% of all adults believe that children who live with a smokers are just as likely to develop asthma or other respiratory problems as children who live with a smoker
- 48% of adults believe that smoking cigarettes around a baby increases the chance the baby will die of sudden infant death syndrome (SIDS)
  - 50% of non-smokers and 37% of smokers agree with this

# *Toll of Secondhand Smoke on Children*

In 2001, children's exposure to secondhand smoke accounted for for:

- 26,300 low birth weight births
- 263 cases of SIDS
- 300,000 cases of pediatric asthma
- 99,000 cases of ear infections

- In 1999, there were over 147,000 smoking-material fires caused by cigarettes.
- 86 young people died from smoking-material fire deaths that same year.
  - This number largely reflects children living in households with adults who smoke.

- In one year, 31,000 fatherless and 12,000 motherless youth were left behind do to smoking
  - Based on data for 1994, smoking that year caused the deaths of 44,000 men and 19,000 women between the ages of 15 and 54.
- Payments made to these children through Social Security will total roughly \$1.4 billion.

## *Conclusion*

- Aside from smoking cessation, clean indoor policies are the most effective way to protect youth from the adverse health effects of secondhand smoke.
- Although positive changes have been made in smoking policies and reducing secondhand smoke exposure among youth, more than 4 million youth continue to be exposed in their homes.
- Tobacco control efforts need to promote clean indoor air policies and educate adults on the dangers of secondhand smoke exposure on others, especially children.

# *Secondhand Smoke Tearing Families Apart – Legacy Policy Report 2*

*Secondhand Smoke  
Tearing Families Apart can  
be found at:*

[www.americanlegacy.org](http://www.americanlegacy.org)

**Legacy**  
American Legacy Foundation®

POLICY REPORT 02

June 2004

## **Secondhand Smoke Tearing Families Apart**

The Health and Economic Burden of Smoking on Children

